




KOREAN CHARCOAL BBQ HOUSE

◆ Opening Hour ◆

MON - SUN : 11:30am - 10:00pm

 dadam\_kbbq

# DAILY <sup>2-3 Servings</sup> Special set

Alcoholic beverages can be substituted with soft drinks



**MONDAY**

**SOY PORK RIBS 1KG  
SOJU 1 + KOREAN BEER 1**

간장쪽갈비+소주1병, 맥주1병

**\$80**



**TUESDAY**

**INSIDE SKIRT 500G  
SOJU 1+ KOREAN BEER 1**

안창살+소주1병, 맥주1병

**\$100**



**WEDNESDAY**

**PORK SHOULDER  
SPICY BULGOGI 750G  
SOJU 1+ KOREAN BEER 1**

대패양념목살+소주1병, 맥주1병

**\$70**



**THURSDAY**

**PORK MARINATED  
SOY BELLY 500G  
SOJU 1+ KOREAN BEER 1**

돼지양념삼겹살+소주1병, 맥주1병

**\$70**

\*Actual food presentation may vary from the images displayed.

# TO SHARE

- It may take 30 mins or more.
- 2 serves of rice included.

Every dish is treated with fresh ingredients and our house-made sauces.



## Gamja-Tang ..... 60

감자탕

Spicy and rich Korean soup with tender pork backbone, vegetables, and a touch of perilla seed for extra flavor.



## Mountain Wagyu Bulgogi..... 59

산더미와규불고기

Sweet and savory Wagyu beef with assorted mushrooms and vegetables.



## Beef Galbi-Jjim..... 63

소갈비찜

Braised beef short ribs in a rich sweet soy sauce. Comes with sweet potato noodles.



## Spicy Pork Galbi-Jjim 63

매운등갈비찜

Spicy braised pork back ribs with vegetables.



\*Side dishes may vary according to seasonal availability.

\*Actual food presentation may vary from the images displayed.



# BBQ MEAT WAGYU

Minimum 2 orders from any meats



**Wagyu Chuck Tail Flap**  
와규살치살 | 150g **37**



**Wagyu Deckle**  
와규본갈비살 | 150g **36**



**Marinated  
Wagyu Rib Finger**  
양념갈비살 | 250g **32**



**Wagyu Cube Roll**  
와규꽃등심 | 200g **49**



**Wagyu Oyster Blade**  
와규낙엽살 | 150g **37**



**Sliced Chuck Eye Roll**  
[ Soy / Spicy ]  
숯불와규불고기 | 200g **29**

\*Side dishes may vary according to seasonal availability.  
\*Actual food presentation may vary from the images displayed.



# BBQ MEAT PORK

Minimum 2 orders from any meats



**Pork Belly**

삼겹살 | 250g **27**



**Pork Jowl**

항정살 | 250g **27**



**Marinated Sliced Pork**

[ Soy / Spicy ]

숯불돼지불고기 | 250g **25**



**Marinated Pork Collar Butt**

양념목살 | 250g **26**

\*Side dishes may vary according to seasonal availability.

\*Actual food presentation may vary from the images displayed.

# BBQ *Set* MEATS



## Marinated Meats Set

양념고기세트 2-3 Servings

1000g **140**

Tomahawk, Rib finger, Spicy sliced pork, Collar butt  
토마호크, 갈비살, 돼지갈비, 매운양념목살



## Wagyu Set

와규세트 2-3 Servings

700g **160**

Wagyu chuck tail falp, Wagyu deckle, Wagyu cube roll, Wagyu oyster blade, Spicy sliced chuck eye roll  
살치살, 본갈비살, 꽃등심, 낙엽살, 매운양념 불고기



## Pork Set

돼지고기세트 2-3 Servings

800g **95**

Pork jowl, Pork belly, Marinated collar butt, Marinated sliced pork  
항정살, 삼겹살, 양념돼지목살, 숯불돼지불고기



## Combo Set

콤보세트 3-4 Servings

1150g **165**

Tomahawk, Pork belly, Marinated rib finger, Wagyu deckle, Spicy marinated sliced pork  
토마호크, 삼겹살, 양념갈비살, 본갈비살, 매운양념돼지불고기



\*Actual food presentation may vary from the images displayed.

## BBQ EXTRA

Side dishes may vary according to seasonal availability.



Seasonal Mixed Vegetables 19

야채 모듬구이 세트

Mixed Mushroom Set 19

버섯 모듬구이 세트

Kimchi for BBQ 10

바베큐용 포기김치

Ssam Vegetable Set 12

(wrap your own way)

쌈용 야채세트

Steamed Egg 14

폭탄 계란찜

Mini Soybean Soup 10

미니된장찌개

Mini Kimchi Soup 10

미니김치찌개

Garlic 1

마늘

Chillies 1

고추

# ENTREE



- Prawn & Chives Pancake** ..... 22  
새우부추전
- Potato Pancake** ..... 20  
감자전
- Kimchi Pancake** 🌶️ ..... 20  
김치전
- Wagyu Tartare** ..... 27  
와규육회 200g
- Japchae [ Wagyu / Veg ]** ..... 24 / 21  
잡채 Stir-fried sweet potato noodle
- Prawn Steamed Egg** ..... 18  
새우꼭탄계란찜
- Kimch Cheese & Prawn King Egg Roll** ..... 25  
대왕계란말이



- Corn Cheese** ..... 12  
콘치즈



- Grilled Wagyu Short Rib Patties** ..... 17  
와규떡갈비



- Boneless Fried Chicken [Original / Sweet chilli 🌶️ / Soy] ...** 35  
순살치킨

- Loaded Kimchi Fries** 🌶️ ..... 14  
김치프라이

- Stir-fried Wagyu w.Chives & Bean Sprout** ..... 23  
와규부추숙주볶음

\*Actual food presentation may vary from the images displayed.

# SOUP & NOODLE

\*Includes one bowl of rice and side dishes.



**Pork Kimchi Soup** 🌶️ ..... 23  
돼지김치찌개

**Soybean Soup** [Beef / Seafood] ..... 23  
된장찌개

**Soft Tofu Soup** [Beef / Seafood] 🌶️ ..... 25  
순두부찌개

**Spicy Beef Soup** [Noodle +3] 🌶️ ..... 25  
육개장 [칼국수 추가 +3]

**Pork Backbone Soup** 🌶️ ..... 25  
뼈다귀해장국

**Beef Bulgogi & Sweet potato noodle Soup** ..... 25  
뚝배기 당면 불고기



**Cold Noodle Soup** ..... 19  
물냉면

**Spicy Cold Noodle** 🌶️ ..... 19  
비빔냉면

**Raw Wagyu Cold Noodle** ..... 24  
Spicy sauce 🌶️  
육회냉면

\*Actual food presentation may vary from the images displayed.



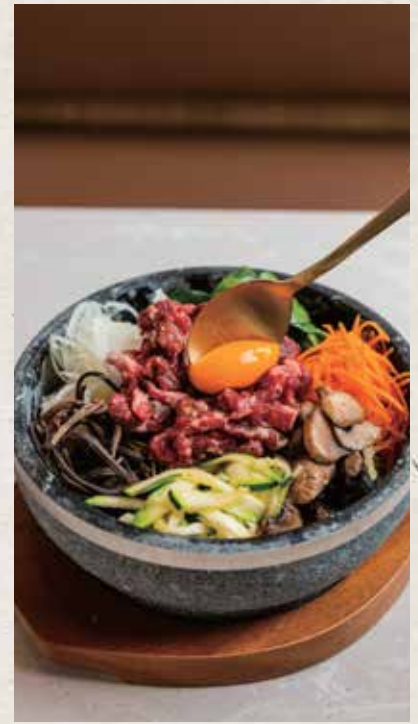
**MEAL** \*Included 5-6 seasonal vegetables  
Comes with your choice of soy sauce or spicy sauce

**Hot Stone Raw Wagyu Bibimbap** ..... 26  
와규육회 돌솥비빔밥

**Hot Stone Wagyu Bulgogi Bibimbap** ..... 25  
와규불고기 돌솥비빔밥

**Hot Stone Mushroom & Tofu Bibimbap** ..... 22  
버섯&두부 돌솥비빔밥

**Hot Stone Kimchi & Flying Fish Roe Bibimbap**..... 23  
김치&날치알 돌솥비빔밥



**Korean King Size Tonkatsu** ..... 26  
대왕돈까스



**Mini Tonkatsu** ..... 9  
미니돈까스

**Mini Grilled Wagyu Patty** ..... 9  
미니떡갈비

**Japchae w. Rice** ..... 9  
잡채밥

**EXTRA SIDE**

**Fresh Kimchi** 3  
겉절이

**Spring Onion Salad** 3  
파채샐러드

**Sidedish Refill** 2  
반찬 추가

**Rice** 4  
공기밥

\*Actual food presentation may vary from the images displayed.



**DADAM use 100% Australia Wagyu MB8-9 grade in order to ensure the highest freshest quality possible. This is our pride and integrity.**



- Food ingredients and prices are subject to be changed without prior notice.
- Please inform us of any dietary requirements of food intolerances before placing your order. However, we cannot guarantee completely allergy-free meals due to traces of allergens such as working environment and supplied ingredients.
- 15% surcharge on public holidays.

